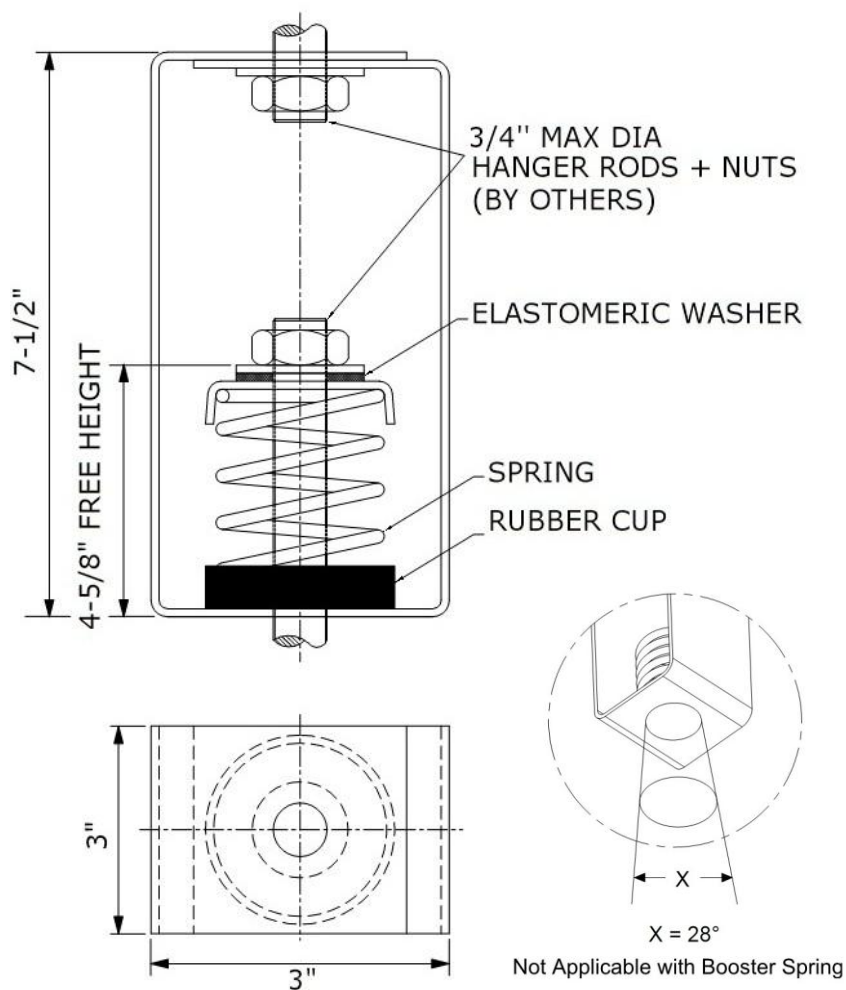




SPRING HANGERS (SHC- 100 Series 1" Deflection)

SHC series spring hangers are large diameter steel springs housed in rectangular steel brackets. The assembly incorporates dual (Steel and Elastomer) washers for uniform load distribution and high frequency isolation. These spring hangers are normally used in critical areas where noise and vibration need to be controlled.



NOTES:

- Bracket: Blue Powder Coated
- Spring: Hot Dip Galvanized
- Bottom Cup with Collar: Neoprene
- Hanger Rods and Nuts not included
- Design allows angular hanger misalignment

APPLICATIONS:

- Fan Coil Units
- Air Handling Units
- Fans
- Pipes
- Ducts



ANDRE HVAC International Inc

ISOLATOR MODEL	RATED LOAD (LBS)	RATED DEFLECTION (INCH)	COLOR	
			MAIN	STRIPE
SHC-111	85	1.4	SILVER	PINK
SHC-112	115	1.3	SILVER	BLACK
SHC-113	170	1.3	SILVER	BLUE
SHC-114	225	1.3	SILVER	YELLOW
SHC-115	325	1.2	SILVER	BROWN
SHC-116	450	1.2	SILVER	RED
SHC-117	600	1.2	SILVER	PURPLE
SHC-118	750	1.1	SILVER	ORANGE
SHC-119	900	1.0	SILVER	GREEN
SHC-120	1100	0.8	SILVER	GRAY
SHC-121	1300	0.8	SILVER	WHITE
SHC-122	1500	1.0	SILVER	GOLD
SHC-111-123	761	1.0	SILVER/SILVER	PINK/NIL
SHC-112-123	789	1.0	SILVER/SILVER	BLACK/NIL
SHC-113-123	831	1.0	SILVER/SILVER	BLUE/NIL
SHC-114-123	874	1.0	SILVER/SILVER	YELLOW/NIL
SHC-115-123	971	1.0	SILVER/SILVER	BROWN/NIL
SHC-116-123	1075	1.0	SILVER/SILVER	RED/NIL
SHC-117-123	1200	1.0	SILVER/SILVER	PURPLE/NIL
SHC-118-123	1382	1.0	SILVER/SILVER	ORANGE/NIL
SHC-119-123	1600	1.0	SILVER/SILVER	GREEN/NIL
SHC-120-123	1660	0.8	SILVER/SILVER	GRAY/NIL
SHC-121-123	1860	0.8	SILVER/SILVER	WHITE/NIL
SHC-122-123	2200	1.0	SILVER/SILVER	GOLD/NIL