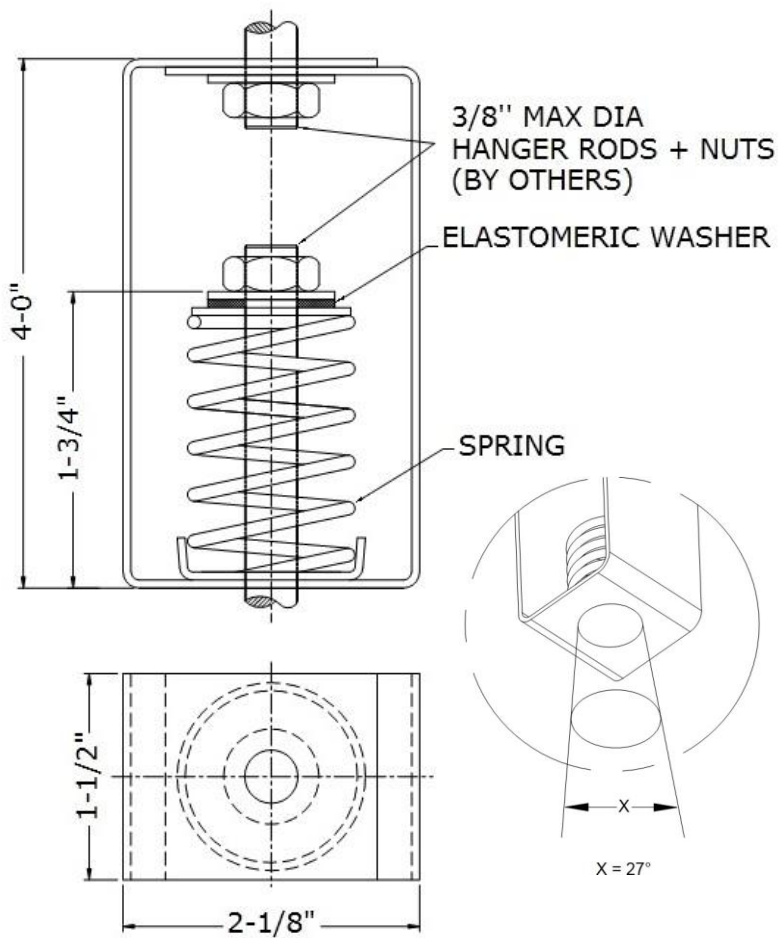




SPRING HANGERS

(SH- Series 3/4" Deflection)

SH series spring hangers are steel springs housed in rectangular steel brackets. The assembly incorporates dual (Steel and Elastomer) washers for uniform load distribution and high frequency isolation. These spring hangers are normally used in critical areas where noise and vibration need to be controlled.



NOTES:

- Bracket: Blue Powder Coated
- Spring: Hot Dip Galvanized
- Design allows angular hanger misalignment
- Hanger Rods and Nuts not included

APPLICATIONS:

- Fan Coil Units
- Air Handling Units
- Fans
- Pipes
- Ducts

ISOLATOR MODEL	RATED LOAD (LBS)	RATED DEFLECTION (INCH)	COLOR	
			MAIN	STRIPE
SH-011	30	0.75	SILVER	BLUE
SH-012	66	0.75	SILVER	RED
SH-013	105	0.75	SILVER	YELLOW
SH-014	150	0.75	SILVER	WHITE
SH-015	225	0.75	SILVER	BLACK