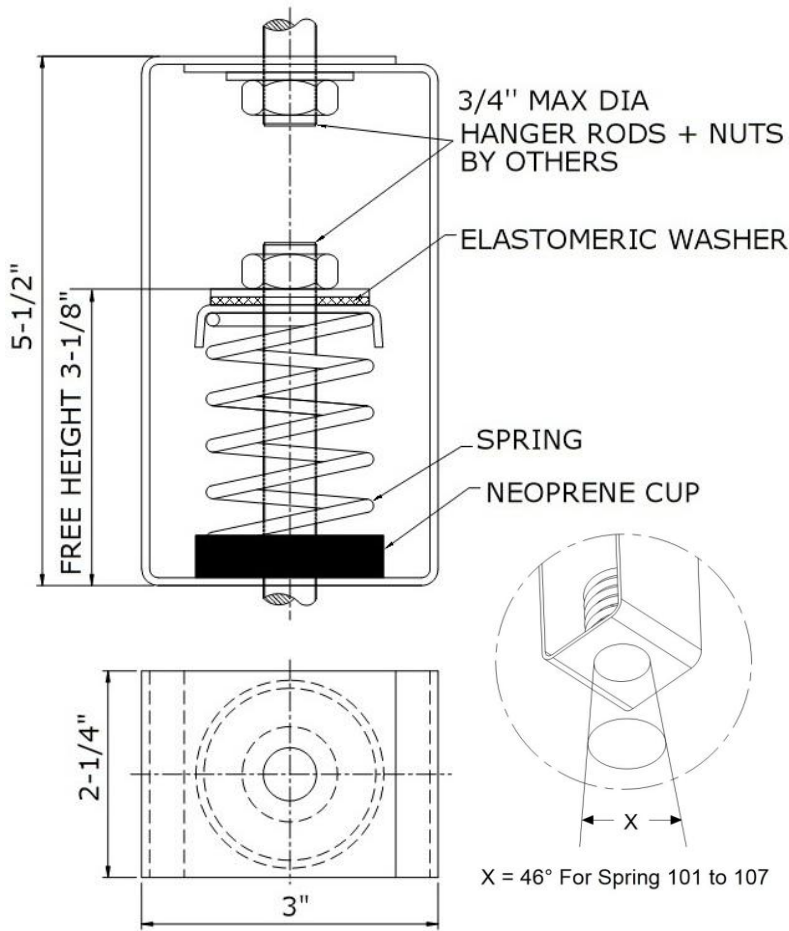




SPRING HANGERS (SHD- 100 Series 1" Deflection)

SHD series spring hangers are large diameter steel springs housed in rectangular steel brackets. The assembly incorporates dual (Steel and Elastomer) washers for uniform load distribution and high frequency isolation. These spring hangers are normally used in critical areas where noise and vibration need to be controlled.



NOTES:

- Bracket: Blue Powder Coated
- Spring: Hot Dip Galvanized
- Bottom Cup: Neoprene
- Design allows angular hanger misalignment
- Hanger Rods and Nuts not included

APPLICATIONS:

- Fan Coil Units
- Air Handling Units
- Fans
- Pipes
- Ducts

ISOLATOR MODEL	RATED LOAD (LBS)	RATED DEFLECTION (INCH)	COLOR	
			MAIN	STRIPE
SHD-101	60	1.3	SILVER	BLUE
SHD-102	100	1.3	SILVER	ORANGE
SHD-103	165	1.2	SILVER	BROWN
SHD-104	260	1.0	SILVER	BLACK
SHD-105	370	0.8	SILVER	YELLOW
SHD-106	450	0.5	SILVER	RED
SHD-107	700	0.45	SILVER	GREEN



ANDRE HVAC International Inc